



**File Name:** Casablanca intellitouch fan manual.pdf

**Size:** 2992 KB

**Type:** PDF, ePub, eBook

**Category:** Book

**Uploaded:** 3 May 2019, 17:43 PM

**Rating:** 4.6/5 from 746 votes.

**Download Now!**

Please check the box below to proceed.



I'm not a robot



reCAPTCHA  
[Privacy](#) - [Terms](#)

### Book Descriptions:

# Casablanca intellitouch fan manual



Always turn Retain this manual for future reference. All wiring must be performed in accordance with national and local electrical codes. If To avoid overheating and possible damage to other The outlet box must be UL Listed for ceiling fan installations, if Casablanca extension poles are available for sloped or high ceiling installations. The maximum current require Maximum light current is 1.0 amps or 100 watts When installing the canopy hatch, make sure all wires. Retain this manual for future reference. CAUTIONTo avoid possible electrical shock, make certain that electricity is turned off at theTo avoid overheating and possible damage to otherThe outlet box must be UL Listed for ceiling fan installations, ifCasablanca extension poles are available for sloped or high ceiling installations. Maximum light current isFor best performance and for your warranty to be valid, use only genuine. Casablanca blades, light fixtures, and accessories.If more Remove fuse for theAlways turn CIRCUIT BREAKERCasablanca dealer for assistance in obtainingThe location of the fan, air circulation,Location. Ceiling fans have practical uses in almost every room in your home. We suggest you follow these mounting recommendations as you decide where to install your Casablanca fan.High humidity combinedFan Size. Variable fan speed capability permits the use of a fullsize 52” fan even in smallerCeiling HeightStandard. StandardFor best performance and best appearance, anCasablanca offersCustom poles are available in lengths up toNote Fan may wobble or vibrate ifUse the tearoff Ceiling Angle Template card inserted in theIt is OK to install your fan.Your fan will not hang straight down,Contact yourAdaptor.”Before discarding packaging material, be certain that all parts have been removed. IMPORTANT! To avoid possible damage to the Halogen bulb holder the fan must be placed on the styrofoam packagingPrepare for fan installation as follows. Step A. Route the wires from the motor through the.

<http://gruporadialcontinental.com/edexcel-international-information-manual-2013.xml>

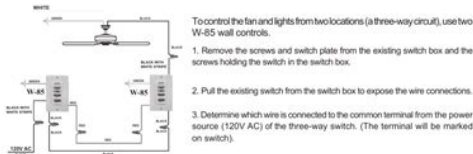
- **casablanca fans intellitouch manual, casablanca fan intellitouch instructions, casablanca intellitouch fan manual, casablanca intellitouch fan manual, casablanca intellitouch fan manual.**

To control the fan and lights from two locations (a three-way circuit), use two W-85 wall controls as shown in the wiring diagram in Figure #5. Before installing the two switches into the wall, place both switches side by side, then locate the 4 dip switches on the side of the two switches. Then make sure that the dip switches are set to the same address on both switches as shown in Figure #4. When setting these dip switches you are setting the channel number that is required to control both your fan and lights from both sides of the room. If you are installing other Intelli-Touch® 3 fans within your home you may need to reset the dip switches on these other fans to a different channel before installing your W-85 wall control into the wall. Please review the section on channel changing on this instruction sheet.



(Figure #4)

**CAUTION!**  
Ensure power is turned OFF at the breaker or fuse panel before starting installation.



To control the fan and lights from two locations (a three-way circuit), use two W-85 wall controls.

1. Remove the screws and switch plate from the existing switch box and the screws holding the switch in the switch box.
2. Pull the existing switch from the switch box to expose the wire connections.
3. Determine which wire is connected to the common terminal from the power source (120V AC) of the three-way switch. (The terminal will be marked on switch).

4. Remove the wire from the common terminal of the three-way switch. Connect this wire to the remaining black/white striped wire on the W-85 control. Secure this splice with a wire nut.

5. Remove the two remaining wires from the three-way switch. Connect the black wire of these wires to a black wire on the W-85 control. Secure the splice with a wire nut. The remaining red wire is to be connected to the other red wire on the W-85. Secure the splice with a wire nut.

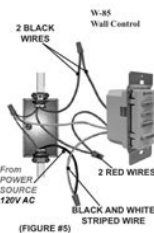
6. Connect the green ground wire coming from the back of the W-85 control to the ground wire in the switch box. Secure the splice with a wire nut.

7. Check your work by using the wiring diagrams as shown in Figure #5 on this page.

8. Install the W-85 in the wall box with the two long screws provided.

9. Install the wall plate with the two short color-matched screws provided.

10. Installation of the second W-85 control is identical. Repeat steps 1 through 9.



(Figure #5)

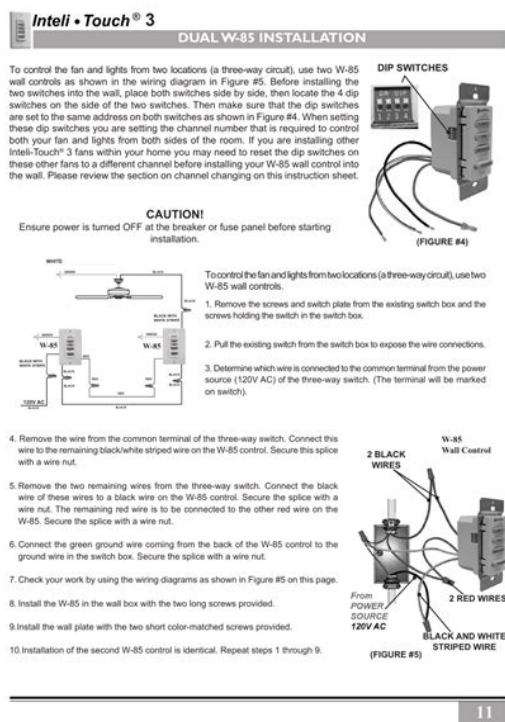
Tip The downrod has a tapered threadStep B. Using the provided allen wrench, loosen the set screwCAUTION Failure to fully lock in the downrodIf you do not have an existing fixture located where you wishWarning To reduce the risk of fire, electrical shock, orUsing Existing Ceiling Fixture Outlet Box. After turning the power OFF at its source either circuitStep 1. Route the wires from the ceiling outlet box throughTighten the screws firmly by hand only, being careful not toCAUTION To reduce the riskTighten the screw firmly by hand only. Note On sloped ceilings, align theHalogen bulb holder the fan must be placed onScrews. Step 3. Locate the three tabs on the top of the fanRemove the three top cover retaining screws and setStep 4. Locate the top cover and note the threeNOTE Make a note ofModel Type before installing the top cover. Step 5. Lower the top cover over the fan downrodStep 6. Once the tabs are aligned, attach the top cover to theStep3. Hand tighten ensuring that all screws are engaged. Test that the cover is on securely before continuing with theScrewsRotate the fanNote Fan weighs 24 lbs.Connect in this orderPOWER wire in ceiling fixture outletStep 10. Install canopy hatch with theStep 11. Straighten the fan, thenStep 12. Blade Installation. Attach the blades to theHand tighten securely.If it is touched, or dirty,A dirty glass bulb will cause theIMPORTANT! When installing the halogen bulb,Step 15. Carefully lift the glass shade up inside the light fixtureStep 16. Rotate the shade in a clockwise direction until it isTIP At first the shade is a very loose fit in theWall Control. Screws 2. Switch BezelsWhite Wall. Plate1. Almond Wall. Wall Plate. ScrewsBefore installing the W85 wall control you will need to check and see if you will need to change the bezel onIf you are going to use white, skip these steps and goStep 17a. Locate the four 4 tabs holding the bezel toW85 is used to describe either white 11 or almond finish.<http://www.eldorado777.ro/upload/editor/edf-design-manual.xml>



If you have multiple Intelithree fans, refer to the section Secure this connection with a wire NOTE The RED wire is not used in this Then make sure that the dip switches If you are installing other W85 wall controls. Connect this. Secure this splice Connect the black Secure the splice with a W85. Secure the splice with a wire nut. Secure the splice with a wire nut. Repeat steps 1 through 9. Always turn the power off during The fan speed is now in memory and will automatically come on at the same To lower speed, turn fan FAN button longer To reverse the airflow Note A four tone signal To vary the light brightness at each touch level. To vary the light brightness After one second the lights will NOTE Light Operation the light varies from "bright" to "dim" over This sequence will reverse the light when it reaches Release the button when the desired level is reached. The brightness level is now in the fan memory and will automatically come on at Step 1. Turn power OFF at the circuit breaker or fuse box and at the toggle switch, NOTE DO NOT set dip switch setting in the remote Step 2. Remove the screws and switch plate from the existing switch box. Step 3. Remove the screws holding the switch in the switch box. Step 4. Pull the existing W85 switch from the switch box to expose the dip switches. Step 5. Change the dip switch settings, assuring that they are different from the Step 7. At the circuit breaker or fuse box and at the toggle switch, turn the power off Step 8. Within 20 seconds of restoring power to the ceiling fan and the W85 Wall. Control press and hold both the "FAN" and "REVERSE" buttons as shown in Figure It can be used to fully To enter the demonstration program This will clear the A multitone signal will verify the start of the test program Lights slowly increase to full intensity. Fan accelerates to speed three with audio tones. Light dims to half intensity. Fan accelerates to full speed with audio tones. Fan reverses at full speed with audio tones. Fan operates at full speed.

Fan turns off with audio tones blades coast for a short time. Lights turn off. The complete cycle lasts slightly over one minute. It will The SafeExit Program gives you about thirty seconds of light when you turn the lights off, To enter the SafeExit Program. SafeExit Immediately press the buttons in the following sequence Button after an audio tone is heard from the The lights will After thirty seconds have elapsed, the lights will NOTE If the lights are left on in the room, the lights will automatically turn. OFF after 2 hours. this is LightMinder. The LightMinder Program automatically turns OFF the fan mounted lights after two hours. To enter the LightMinder Program Once the lights turn on, they will The lights will stay on for 30 seconds and The HomeSafe Program makes an unoccupied home appear occupied by turning the lights To enter the HomeSafe Program. Button off This program overrides Once the lights turn on, they will automatically turn off This seven hour pattern Button OFF for five seconds. The program reduces the To enter the FanMinder Program OFF for at least 5 seconds. A timer is now initiated and the fan will reduce one speed for The fan will not, however, descend below the second lowest speed. OFF for three seconds. Check all wire connections. Make sure the power is turned off during this Check all connections. Replace the fan receiver. Within 20 seconds from restoring Make sure the hanger bracket is attached tightly to the ceiling outlet box Make sure all Fan wobbles or shakes excessively. Fan is noisy during operation. Fan does not run on low speed This device complies with RSS210 of Industry Canada. Operation is subject to the

following two conditions 1 this deviceOperation is subject to the following two conditions 1 this deviceHowever there is no guaranteeIf this equipment does cause harmful interference to radio orNote Any changes or modifications to theDimensions. WeightBlade Span With. Blade Pitch. No. of Blades. Technology. LightbulbsElectricity Use 119 watts.



<http://superbia.lgbt/flotaganis/1649523093>

Then press and hold the fan button. The fan will slowly walk up in speed starting from speed one and ending at speed six. Let go at whatever speed you want it to hold. Pressing the fan button quick will shut it off. If you press it quick from a stop it will default to the high setting. To adjust the light press and hold it and let go at the setting you like. Press the light button quick and the light will shut off. Press it quick again and it will go back to the brightness you last set. To reverse the fan it must be running. Low speed is the best for reversing. The W32 has a reverse button while the older W11 you have to press the fan and light button at the same time. Jack 9528982754 Login to post A serious design flaw, I would complain to Casablanca if you have the time. Having trouble finding correct control. This isnt a four seasons III or intelitouch III. Any tips where to find proper. I was trying to change the light bulb, but after turning off the power to change the bulb, the power would not return to the fan. I have two wall. The control boards are expensive but easily replaced by a diyer. I think I have encountered this problem twice. These fans are very well made and in the past I decided it was worth repairing. However with the new fan technology out there it would be wise to shop around and weigh your options. They sell replacement W505 parts at Fan Man Lighting. Hope this helps. How do I adjust the fan to be able to vary the fan speed so I dont have. Today there was an interruption of electrical power to the house and now the fan wont work. All 3 had the same problem. No problems since. How can this be fixed The remote is a simple toggle switch, turn in on, listen to the beeps, off an on quickly to set it. How do I reverse direction on this fan To reverse it, turn it on a low speed. Then, turn it off and on, then off and on again, quickly. You should hear a series of beeps, and the blades will slow down and then reverse.

<http://creaturegraphics.com/images/calumet-travelite-manual.pdf>



## INSTALLING THE W-85 WALL CONTROL

**NOTE:** W-85 Wall Control should only be installed on Cuisinart's Intelli-Touch® 3 fans with DOWNLIGHTS ONLY.

The wall control installs in the same manner as an ordinary light switch, using an existing wall box and wiring. This controller is designed to signal the fan microcomputer as well as perform normal switching operations. For this reason the following precautions must be observed:

1. Use only the Casablanca W-85 wall control.
2. Do not use any additional control with your Intelli-Touch 3 fan (for example, dimmer, or fan speed control).
3. Do not use more than one fan per wall control.
4. No other light fixtures or electrical appliances may be connected on the circuit controlled by the W-85 wall control.

## SINGLE W-85 INSTALLATION

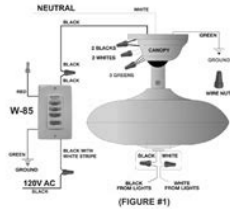
**CAUTION!**

**CAUTION:**  
Ensure power is turned OFF at the breaker or fuse panel before starting installation.

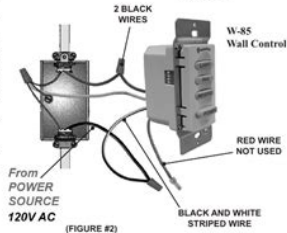
W-85 is used to describe either white (-11) or almond finish. If you have multiple Intelli-Touch 3 fans, refer to the section "Changing Frequency Setting" on page 13.

1. Remove the screws and switch plate from the existing switch box.
2. Remove the screws holding the switch in the switch box.
3. Pull the existing switch from the switch box to expose the wire connections.
4. Remove the two wires from the switch.
5. Connect the **BLACK** wire from the **POWER SOURCE** that you just removed from the switch to the **BLACK/WHITE STRIP** wire on the W-85 wall control. Secure this connection with a wire nut.

**NOTE:** The RED wire is not used in this application, DO NOT remove the crimped cap from the wire..



6. Connect the second **BLACK** wire that you just removed from the switch to the second **BLACK** wire on the located on the back of the W-85 wall control. Secure this connection with a wire nut.
7. Connect the green ground wire coming from the back of the W-85 control to the ground wire in the switch box. Secure the splice with a wire nut.
8. Check your work by using the wiring diagrams as shown in Figures #1 and #2.
9. Install the W-85 in the wall box with the two long screws provided.
10. Install the wall plate with the two color-matched screws.



If it is set at medium or low, it will mess with the remote operation. You can re set one fan to operate at a different frequency. The instructions are in the manual or online. I don't know if the other girl that works here and doesn't want to listen to me when I say don't put the dryer on high is drying the clothes too high or if the gas pressure is too high or what the problem is but everything white comes out yellow or dark yellow or orange brown. Anything that has any kind of plastic or similar material to it melts. I have stated numerous times do not put the dryer on high or medium because of this. Everything smells like it was baked in an oven and guests are complaining. Can someone please tell me what to do. Replaced Amateur. Turning switch on trying to turn over, but will not just a humming sound. It turns off every 23 minutes and then turns on again still with no heat. Answer questions, earn points and help others. Using the online preview, you can quickly view the contents and go to the page where you will find the solution to your problem with Casablanca Fan Company IntelliTouch 3 PN. To start viewing the user manual Casablanca Fan Company IntelliTouch 3 PN on full screen, use the button Fullscreen. However, if you do not want to take up too much of your disk space, you can always download it in the future from ManualsBase. The option to print the manual has also been provided, and you can use it by clicking the link above Print the manual. You do not have to print the entire manual Casablanca Fan Company IntelliTouch 3 PN but the selected pages only. paper. If you want to quickly view the content of pages found on the following pages of the manual, you can use them. What do I do What can I do You will need to know your fan model number in order to determine your next step. Your fan model number is located on a sticker on the top of the fan's motor housing. If it is a Low Profile mount fan, the model number sticker will be on the mounting bracket.

<https://institutolagranja.com/images/caltrans-survey-manual-chapter-5.pdf>



Below is a list fan model number ending letters and the corresponding control system of the fan. If your fan model number ends in one of these letters, there is a reset procedure that will sometimes restore control functionality. To access the reset instructions for your fan, click on one of the links below the letter at the end of your fans model name. There is a charge for their services, but they are your best option for fan repair. Their contact info is below. What do I do. Computertechnology enables the system to use the two wires already in place in your home so costly electrical work is not required; a third wire is not addition to allowing fan speed control, full range light dimming, and totally silent operation, Inteli Touch offers a host of efficient programmable features that clearly distinguishes Casablanca from the competition. Nine different Casablanca fan series are available with this SpeedsSelect from 6 various fan speeds in forward and reverse for perfect comfort level and room Minder Automatically adjusts the speed of the fan as you sleep to compensate for cooler night air for all night Turns lights off 30 seconds after pressing the light button, giving ample time to leave a room without stumbling in Provides a controlled lighting cycle that makes your home look occupied when you are not Minder Can automatically turn lights off two hours after they are returned on. Computertechnology enables the system to use the two wires already in place in your home so costly electrical work is not required; a third wire is not addition to allowing fan speed control, full range light dimming, and totally silent operation, Inteli Touch offers a host of efficient programmable features that clearly distinguishes Casablanca from the competition.

Nine different Casablanca fan series are available with this SpeedsSelect from 6 various fan speeds in forward and reverse for perfect comfort level and room Minder Automatically adjusts the speed of the fan as you sleep to compensate for cooler night air for all night Turns lights off 30 seconds after pressing the light button, giving ample time to leave a room without stumbling in Provides a controlled lighting cycle that makes your home look occupied when you are not Minder Can automatically turn lights off two hours after they are returned on. 2 A real energy saver. Inteli Touch III Name RAS 6303 HIREL OPERATIONAL NOTES When using the Inteli Touch wall control unit to program the fan by using the light fan power buttons, you may notice some of the following conditions Lights flickering Irregular blade rotation Motor noise This is caused by the use of the light and fan control buttons when you are programming the fan. The use of these buttons causes brief electrical transients on the AC power sine wave and is not a problem. When programming is completed and the buttons have been released, operation will return, electrical transients may cause the memory of the microcomputer to default or be scrambled. To reset the microcomputer 1. Turn OFF power 2. Wait 3 seconds 3. Turn ON power 4. Reprogram to desired mode Normal operation will Inteli Touch wall control unit may feel warm to the touch. A small amount of heat is normal for the Inteli Touch wall control quiet motor operation that you expect from your fan is directly related to the AC power waveform. 3 The Inteli Touch wall control unit is an active electronic control that passes an uninterrupted AC sine wave to the fan continuously except during program mode. The wall control unit is utilized to provide AC waveform signals or instructions that are interpreted by the microprocessor chip on the RMM control center for the fan is the RMM board with

the microprocessor chip and processor memory.

<https://www.hagensmarketing.com/wp-content/plugins/formcraft/file-upload/server/content/files/162739c2735e99---britax-explora-car-seat-manual.pdf>

The microprocessor chip interprets the instructions provided from the wall control unit. The microprocessor controls one of six separate electronic switches known as triacs which in turn selects one of six available motor speeds. On speed six high speed, a triac controls the motor directly. On speed five, a triac directs current first through a voltage dropping resistor in the BFR before going to the motor. This reduces the voltage to the motor so that it runs slower. 4 On slower speeds, other triacs progressively switch higher resistances in series with the motor. Direction of fan rotation is controlled by a relay on the BFR is a flexible resistor array with five series resistors with taps at the junctions. The BFR also contains two power resistors used in the power supply circuitry for the Replacement CONTINUED III Name RAS 6303 HI REL BFR REPLACEMENT To test or replace a BFR it is necessary to partially disassemble the SHARP BENDING OR FOLDING OF THE BFR COULD DAMAGE IT. HANDLE WITH TURN POWER OFF BEFORE Remove the blades and blade holder Remove the housing thru bolts while holding the bottom plate in Remove the bottom plate and center To test for a defective BFR remove the BFR connector from the RMM board and plug a new BFR into the RMM board. If the problem is eliminated, replace the BFR as follows To remove the defective BFR, the RMM support shroud must first be removed. To do this, first remove both connectors from the RMM board by grasping the edges and gently pulling out with a very slight rocking motion. 6 Loosen the two support screws to remove the RMM support. Now completely remove the two support screws. CAREFULLY peel the BFR from the motor housing, starting at one end. Clean any remaining adhesive from the motor using naphtha or lighter CAREFULLY peel the paper backing from the new BFR.

[art-electric.com/userfiles/capri-institute-of-manual-therapy-courses-2015.pdf](http://art-electric.com/userfiles/capri-institute-of-manual-therapy-courses-2015.pdf)

CAREFULLY position one end over the support screw hole, then gently but firmly wrap the BFR around the motor, CAREFULLY keeping it in alignment so that the holes and slots in the ends of the BFR will align with the holes in the motor. Make sure there are no air bubbles or wrinkles in the BFR; it must adhere as tightly as possible to the motor. Next, reinstall the two support screws and slide the RMM support into place. Note The microcomputer reads the presence of the LDM by detecting the operation of a small light emitting diode within the optocoupler on the microcomputer also controls the direction of the fan through a small reversing relay mounted on the RMM circuit control motor speed, the microcomputer selects one of six outputs, each of which turns on an electronic switch known as a triac. These six triacs are located on the RMM circuit high speed, a triac drives the motor directly. In all other speeds, a triac drives the motor through one or all five dropping resistors contained within the BFR. This Technical Bulletin will help in the identification of the motor run capacitors on the different PC boards. Because of the different motors Casablanca has used over the years, it is very important that you match the correct PC board with the right motor. By using the wrong board, the run capacitor on the board will make the motor run hot. At the time you are replacing a motor or PC board you must look at the run capacitors and match the values, either being 9mfd, 10mfd or 11mfd. 10 The following information will help you locate and identify motor run capacitors on the different PC boards. The NEW RMM V will be used as the replacement for all levels of RMM PC boards, such as the RMM II, RMM III and RMM IV.

R NOTE As for the Control W32 OR W33 MUST be use with the NEW RMM VPC PC BOARD Replacement CONTINUED RMM PC BOARD Replacement CONTINUED W32 OLD Part Number 1901770 NEW Part Number 9901160 In the Name RAS 6303 NEW Part Number 9901150 In the Number 9901150 Used in the Bel Air Duel Halo, this is a 2 light Board for the Duel Halo only. RMM V part in production models as of December 1st, 2000 10mfd Motor Run Capacitor Part Number



7801100 In the Number 7801100 RMM IV with the 11mfd Run Capacitor will still be used for the XLP Motor Run Capacitor OLD Part Number 9901100 NEW Part Number 9901140 In the Number 9901140 9uf board is used in the 19th Century and the Alpine fans, the Alpine fan was manufactured in 1988 using the SAMSUNG motor. Show more Ensure power is turned OFF at the breaker Expecting Enterprise PCIe SSDs at range of power levels, and expecting Enterprise PCIe SSDs to support software settable power limit, and G ageW ySM 1 Introduction GageWay SM with RS232 Output GageWay SM with USB Output The GageWay SM is an easy to use interface designed to connect a Mitutoyo or Mitutoyo POWER ADAPTERS. It is extremely important to understand the board power requirements when selecting. I don't know if it is even available, and I DON'T want to spend the fortune to buy the troublesome thing, if I could. What I want to know is the wiring schematic of the motor, all 10 wires! So I can add a manual speed control switch. I did come across a video of how to convert Intel Touch fans to regular wall controls last year I would have to look for it but I keep you updated if I see it Casablanca Fan Repair It. I purchased a Lutron FS5E fan speed control. After the installation my. The odd thing is that it only has red and black pig tails. I connected the hot to the black and the neutral to the red; it didn't work. I see a white wire connected to a fuse and then the control knob. Any ideas There are two switches, one controls an overhead light and the other the exhaust fan.

I see 4 different bundles coming into the box and all the blacks and all the whites are tied together. That part all makes sense, but where I'm getting lost is that both switches are wired together by one black. I'm trying to wire a Lutron occupancy sensor and I'm lost on what to do since the switch for the fan is also connected to the switch for the light. They both operate independent of each other and there are no other switches that control either. Anyone able to help me wrap my head around this. I'm guessing that it's easier than I'm making it out to be. I've made a schematic the best I could and attached pics in case my description isn't the best. Thanks! Chris We welcome your comments and All rights reserved. You may freely link View our Privacy Policy here. After a lot of research online I have been able to determine that the fan is controlled by a Casablanca Intel Touch W11 wall mounted switch. It has the 3 switches light, fan, and power but for the life of me I can't find anything anywhere that details how these work. At times I press the power button and nothing happens, other times the light comes on but not the fan, other times the fan seems to change speed. I know that I'm probably pressing the buttons in the wrong order or something. So I'd love to find a set of instructions so that I could figure this out. Any help would be greatly appreciated. Thanks Essentially it's a matter of either pressing and releasing or pressing and holding to get it to do what you want. Power, Lights, Speed, Reverse are going to be most relevant to your daily operation. The other things are additional programs that you can enter to make the fan operate itself in different ways. Just a general note for you, you don't need to turn the Power button off really at all unless maybe you're going on a vacation and don't need it to be on, or particularly during a thunderstorm. I have it and can send you a scan. Please try your search again later. I just need a wall switch.

I have power to the switch but cannot get the light or fan to work. Cannot afford the whole kit. I see the switches, but change them to what. My fan is not operating at all. Which kit do I need Or just the hand held remote. Is this conversion kit correct for my fan Installation requires replacing the wall switch and the control board in the fan housing. We had to remove the blades and a cable from the old board to do the install, but when it was back together it worked perfectly. Installation requires replacing the wall switch and the control board in the fan housing. We had to remove the blades and a cable from the old board to do the install, but when it was back together it worked perfectly. My fan was about 10 years old. My 30 year old Casablanca in another room has never needed a repair! Installation requires replacing the wall switch and the control board in the fan housing. My 30 year old Casablanca in another room has never needed a repair. The site may not work properly if you don't update your browser. If you do not update your browser, we suggest you visit old reddit. Press J to jump to the feed. Press question mark to learn the rest of the keyboard shortcuts Log in

sign up User account menu 11 Casablanca Ceiling fan problems I recently moved into a house which was built in 1988. Installed in this house at the time were several Casablanca ceiling fans with the IntelliTouch system the old W11 threebutton switches. According to what Ive found online, this is achieved by turning the power switch OFF for 3 seconds, turning it back on, then pressing LIGHTFANLIGHTFAN. I left, came back, and no change in the lights. I turned the power off for 30 seconds and turned it back on. I turned on the fan with no problem. While the fan is running, the light switch works. Once I turn the fan off, hitting the light switch causes the tones and no light.

However, turning the fan on, turning it off, hitting the light switch, hearing the tones, and turning the fan back on, the fan is now reversed direction. The light switch works when the fan is on, but when the fan is off, the light switch changes the direction of the fan. Also, pressing both buttons with the fan on reverses direction as normal. Apparently, these fans have control board built in that interfaces with the intellitouch. Something on the board was fubared, and I ended up having to get a new one. I think it was about 150 for a board and remote set. Call Casablanca, and they should be able to send you the new board. Not a hard install. I definitely wouldnt pay someone to do it. Thats what I was afraid of. Strange that it only happened after trying to initialize a specific program. I think the replacement Casablanca RMM board requires that I upgrade to the W32 wall control as well. I may remove the RMM and look for damaged components that I can replace and resolder. These fans freak out when they try to dim a CFL. Replaced with an incandescent and it worked like a charm. All rights reserved Back to top. Computer technology enables the system to use the two wires already in place in your home so costly electrical work is not required; a third wire is not needed. In addition to allowing fan speed control, full range light dimming, and totally silent operation, Inteli Touch offers a host of efficient programmable features that clearly distinguishes Casablanca from the competition. Nine different Casablanca fan series are available with this technology. Variable Speeds Select from 6 various fan speeds in forward and reverse for perfect comfort level and room ambience. Fan Minder Automatically adjusts the speed of the fan as you sleep to compensate for cooler night air for allnight comfort. SafeExit Turns lights off 30 seconds after pressing the light button, giving ample time to leave a room without stumbling in the dark.

HomeSafe Provides a controlled lighting cycle that makes your home look occupied when you re not there. Light Minder Can automatically turn lights off two hours after they are turned on. A real energy saver. The use of these buttons causes brief electrical transients on the AC power sine wave and is not a problem. When programming is completed and the buttons have been released, operation will return to normal. Occasionally, electrical transients may cause the memory of the microcomputer to default or be scrambled. To reset the microcomputer 1. Turn OFF power 2. Wait 3 seconds 3. Turn ON power 4. Reprogram to desired mode Normal operation will return. The IntelliTouch wall control unit may feel warm to the touch. A small amount of heat is normal for the IntelliTouch wall control unit. The IntelliTouch wall control unit is an active electronic control that passes an uninterrupted AC sine wave to the fan continuously except during program mode. The wall control unit is utilized to provide AC waveform signals or instructions that are interpreted by the microprocessor chip on the RMM board. The control center for the fan is the RMM board with the microprocessor chip and processor memory. The microprocessor chip interprets the instructions provided from the wall control unit. The microprocessor controls one of six separate electronic switches known as triacs which in turn selects one of six available motor speeds. On speed six high speed, a triac controls the motor directly. On speed five, a triac directs current first through a voltage dropping resistor in the BFR before going to the motor. This reduces the voltage to the motor so that it runs slower. On slower speeds, other triacs progressively switch higher resistances in series with the motor. Direction of fan rotation is controlled by a relay on the RMM. The BFR is a flexible resistor array with five series resistors with taps at the junctions.

<https://www.becompta.be/emploi/bosch-wfc-2067-manual>