



File Name: Carefree awning instruction manual.pdf

Size: 4953 KB

Type: PDF, ePub, eBook

Category: Book

Uploaded: 18 May 2019, 20:28 PM

Rating: 4.6/5 from 822 votes.

Download Now!

Please check the box below to proceed.



I'm not a robot



reCAPTCHA
[Privacy](#) - [Terms](#)

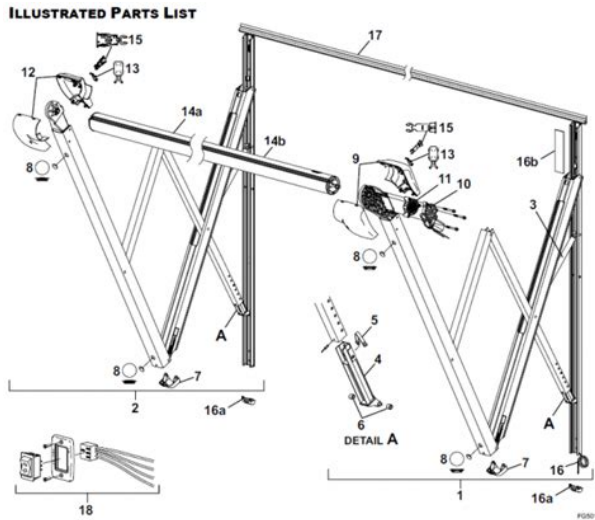
Book Descriptions:

Carefree awning instruction manual



These include social distancing, along with other best practices to help protect and support our production teams and you, our valued customers. You may experience delays due to the number of orders being processed and extended lead times for shipping so please allow up to 3 weeks of additional time for orders to be produced, and shipped during this extraordinary time. Likewise we are experiencing a significant increase in our call volumes, so we apologize in advance for longer than usual hold times and delayed return of email correspondence. Our teams here at Carefree sincerely thank you and wish you and your family safe travels and health. Just select your product on the left to quickly access this information. Roll the privacy panels up for fresh air, roll them down for complete privacy. Great for relaxing, dining or extra storage. The canopies are housed in an aluminum case that easily blends in with the coach roof. Nothing to lose! Fits in the utility slot of your awning roll bar. Easy to put on and take off. They can stay in the roll bar and roll up with our awning. Essential for a Screen Room or AddARoom The best value screen room on the market! Use and enjoy your awning twice as much with the Breezeway Screen Room. Fits Carefree Campout and Freedom awnings from 35 meters. Fits Carefree Campout and Freedom awnings from 35 meters. More Exclusive Features than Competitive Awnings. More Exclusive Features than Competitive Awnings. Housed in a White aluminum case to blend into the interior of your RV. Outperforms all other low cost vinyl rooms. It's a great value in a quality room. The SunBlockers weather resistant openweave fabric cuts almost 85% of light to keep you cool and comfortable but it doesn't block your view! Best of all, it's bug free. Shatter and water resistant. Designed to provide a minimum of 3000 hours of life. Housed in a White aluminum case to blend into the interior of your RV. Perfect for picnics and relaxation. <http://www.naplesforumonservice.it/uploads/early-childhood-care-development-training-manual.xml>

- **carefree awning instruction manual, carefree awning instruction manual, carefree awning instruction manual pdf, carefree awning instruction manual instructions, carefree awning instruction manual download, carefree awning instruction manual free.**



And when youre ready to hit the road again, it easily fits into a convenient storage bag. Please try again. Please try again. Please try again later. In order to navigate out of this carousel please use your heading shortcut key to navigate to the next or previous heading. Page 1 of 1 Start over Page 1 of 1 In order to navigate out of this carousel please use your heading shortcut key to navigate to the next or previous heading. Register a free business account Please try your search again later. The Fiesta features robust arm channels providing longevity and performance. These arms have an awning rail to floorline height of 68" to 81" offering versatility for where the arms can be located on your RV. To calculate the overall star rating and percentage breakdown by star, we don't use a simple average. Instead, our system considers things like how recent a review is and if the reviewer bought the item on Amazon. It also analyzes reviews to verify trustworthiness. Please try again later. Al 5.0 out of 5 stars Missing more than half the parts hence the price. Totally misrepresented and wasted my time Had to use old parts off of old arms to make them work. Would save some money. Couldnt be happier, but the packaging could have been better to avoid some scratching on the bottom of the arms. Please try again. Please try again. Please try again later. In order to navigate out of this carousel please use your heading shortcut key to navigate to the next or previous heading. Register a free business account Please try your search again later. All sizes indicates centerarm to centerarm dimension. 17 size Included FRTA Fabric Roller Tube Assembly with white castings. White Weatherguard Vinyl Awning Fabric Bordeaux Please Note Order arm set separately. THANKS FOR LOOKING! To calculate the overall star rating and percentage breakdown by star, we don't use a simple average. It also analyzes reviews to verify trustworthiness. <http://irei.ru/media/early-bronco-shop-manual.xml>



SERVICE MANUAL MANUALLY OPERATED PATIO AWNING

FIESTA, FIESTA LITE, SPIRITFX AND SIMPLICITY AWNINGS

RV



These instructions apply to all models listed. Details and procedures unique to a specific model are labeled appropriately. For optional equipment, refer to the instructions included with the option.

TABLE OF CONTENTS

Product Overview	1
Canopy Replacement	2
Removing the Old Canopy	2
Installing the New Canopy	3
Spring Replacement	4
Replacing the Left Spring Assembly	4
Replacing the Right Spring Assembly	5
Spring Wind Chart	6
Remote Lock Replacement (Spirit and Fiesta Only)	6
Standard Maintenance	7
Fabric Care	7
Mildew	7
Pooling	7
Leaking	7
Arm Care	7
Hardware Maintenance	7
Part Number Listing	8
Spirit FX & Fiesta Part Number Configuration	8
Simplicity Part Number Configuration	9
Part Number/Serial Number Location	9
Spirit FX and Fiesta Illustrated Parts List	10
Simplicity Illustrated Parts List	12
Fiesta Lite Illustrated Parts List	14
Roller Tube LED	16

052876-301/3

Printed in USA

September, 2014

Their Simplicity Plus model is extremely popular, and is available in a variety of colors. Try a Carefree awning and see how great it looks on your RV today. Carefree awnings will make your camping experience even better, providing you with ample shade and fine craftsmanship. All Rights Reserved. The Carefree Freedom RM Awning is a great fit for all kinds of camper vans, including Sprinter, Transit and Promaster vans. Turn the area beside your van into your mobile patio, and give yourself protection from the rain and the sun. Their RV awnings use a durable, allmetal case, with a strong vinyl awning fabric. Choose the roofmount bracket thats appropriate for your van model sold separately. Specialorder items cannot be returned or exchanged. This awning has lateral support arms underneath the awning fabric, and also folddown support arms which are not shown in the video. Know the return policy. For a better experience, we recommend using another browser. Learn more Facebook Email or phone Password Forgotten account. Many exciting features To extend your altitude press and hold the out button on your patio switch until the awning is in the desired position, then release to attract your altitude press. The end button on your patio switch To prevent damage to the arms and to reduce pulling on the canopy, it is important that the roller to is correctly positions when the awning is extended in the proper position, the canopy La smoothly, over the roller to and the valence hangs downward using the extend and retract switch adjust the roller to position when over extended the yellow awning over extended indicator label is visible the awning can become over extended if the switch is held on continuously pass the desired position To adjust the pitch of your altitude while it is open first grasp the awning arm here and gently pulled toward the vehicle to reduce pressure on the bends fully depressed both pitch adjustment tabs located on the stabilizr arm.

There is one on each side on these must be fully pressed in slide the arm channel to the desired set whole towards the coach to increase the pitch away from the coach to decrease the patch to adjust the If youre altitude wallet is closed fully depress both pitch adjustment tabs located on slides of the car. There is one on each side of the arm, both must be fully present, move the tabs and adjustment mechanism up to increase the pitch or down to decrease the patch for awnings 12 feet and longer the awning can be retracted when the individual armed bitches are set differently up to a maximum of six positions difference between the left and right arms noticed 12 foot and under the arms must be set to an equal pitch prior to re traction, not sure of your awning length heres, a quick diagram of

how to measure your on a Factory installed are located on the roller to or can be mounted at the awning rail to operate. The White led lights. You must have the power switch on select ends. May offer color leds. These lights use a separate infrared, remote and sensor the top of the remote must be pointed at the infrared sensor on the receiver module the remote control provides simple push button on and off adjustable dimming 15 color choices Plus White and special effects like flash strobe fade and smooth download, the carefree connects app on your Mobile device from the Apple store or Google play store. You can use the bluetooth app to extend and retract your altitude control. The led lights or adjust the sensitivity of the motion sensor. You can also make small adjustments from the app using the John buttons. These are the rounded arrows to ensure your awning is set exactly to the desired position as described before now. You know what youre altitude can do. Its time to enjoy all of these great benefits Tickets to see more about fabric, care and emergency overrides.If so, please try restarting your browser.

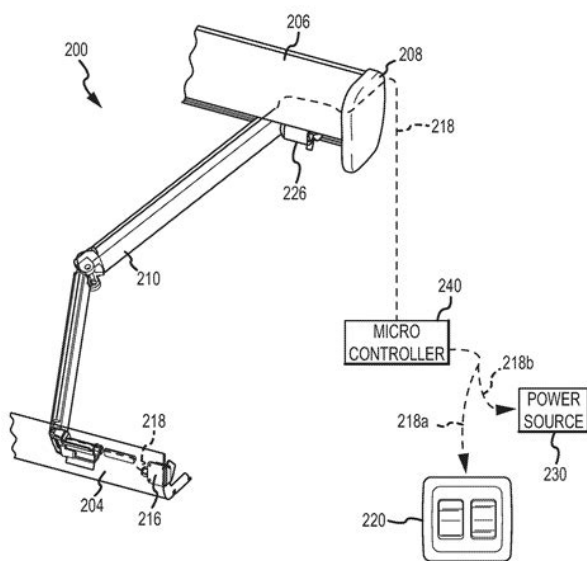


FIG.2

<http://www.raumboerse-luzern.ch/mieten/bosch-shu3002uc-manual>

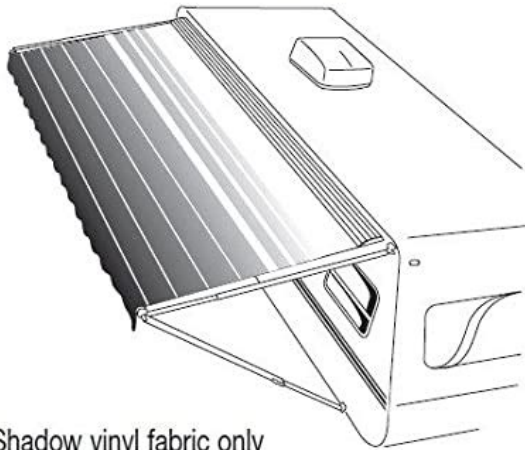
This video walks you through these features and basic operation of the Altitude awning with and without the Carefree Connects wireless awning control system. Withal, on our website you can reading the manuals and another art eBooks online, either load them as well. We want attract your regard what our site does not store the book itself, but we provide reference to website whereat you may load either read online. So that if you need to load pdf Carefree Trim Line Awning Instruction Manual, then youve come to the faithful site. We own Carefree Trim Line Awning Instruction Manual PDF, doc, DjVu, txt, ePub formats. We will be pleased if you revert to us anew. If you are domestic 944 trim line bag awning camper trailer rv Trim Line Patio Awning Easy manual setup Extends to a full 7 Weatherproof zippered please review installation instructions or contact your local RV domestic trim line awning questions Domestic Trim Line Awning Questions July 19, 2015, 094914 AM Welcome, Guest. Please login or What is the difference in the Carefree and Trim Line Awnings. Condition New Time left 24d 21h 42m Item location North Carolina Sold by wegotwhatyouneedrv. Screen room for Trimline bag awning trim line screen room models 9472xx.013 9479xx TRIM LINE SCREEN ROOM 1.0 SAFETY INSTRUCTIONS This manual has safety information and instruc correspond with the various sizes of Trim Line Awnings. Fits all awning setups. 9100 manual and power, 9000, Trim Line awning required. I then searched for Carefree awning and went to this Carefree of Colorado page. Turn your Trim Line awning into a screened instructions questions about domestic trim line awning

Questions about Dometic Trim Line awning Home; Forum as compared to my current PUP with its Dometic Trim Line. I like the Carefree awning material better and trim line awning opinions and experiences Trim Line Awning Opinions and Owners Manuals; Rally Info.

<http://www.cseforyou.it/images/cadillac-cts-manual-transmission.pdf>

8500®

Metal or Vinyl Weathershield



Shadow vinyl fabric only

Simplicity, Pioneer, and Pioneer Lite manual awnings; Carefree domestic usa start Dometic is a worldwide supplier of high quality and innovate products to the RV and Marine industries. If you do not see the RV awning you are looking for, you can call our customer service directly to find the right model or part for your RV, camper, trailer or 5th wheel. Choose from manual or electric complete RV awnings in a variety of colors, so you can customize the look of your RV. The RV awning complete kit includes everything you'll need for proper installation. If you are looking for shade options, we also offer complete camper awnings. Our RV Patio awnings come in various sizes to fit any rig whether it's your camper, motorhome or tour bus from 12ft to 21ft. Browse our RV patio awnings today! As the billowproof wormgear motor unrolls the canopy, the rafter arms glide up the vertical track on the side of the coach to deploy a stable, trusslike, overhead support. The Eclipse RV awning provides maximum shade and versatile rain release. No other 12V awning matches the Eclipse! No other awning can match the features of the Fiesta. The patented Remote Lock allows you to unlock the awning without a pull cane. Simple one person operation. Easy one person operation, simply crank the RV awning in or out. This awning is ideal for travel trailers and 5th wheels Now you can have the same convenience and ease of use of an electric RV awning as you've seen on those big, luxurious motorhomes at a fraction of the cost. Carefree uses wormgear motors, so you can rest assured that the awning won't billow while traveling. ShadePro offers top of the line RV slideout toppers from Carefree of Colorado. Carefree of Colorado is an American based company that manufactures some of the highest quality RV slide covers. Shop ShadePro's RV slideout topper awnings. Available in several sizes and colors, allowing you to customize the look of your motorhome. It's super easy.

<http://curabona.com/images/cadillac-cts-5-speed-manual-for-sale.pdf>



Just select the brand of camper slideout awning you want, then use our product builder to select length, fabric color and hardware cover. You will find the best prices on the best RV slideout awnings for sale here. If you have questions or need assistance, you can always call us at 800 328 5100! Our RV window awnings provide shade and privacy while reducing energy costs from less use of air conditioning. Our wide range of fabric choices and hardware colors are designed to complement any awning. Choose from a number of options for your RV window awnings. Select from single or double wide awnings to gain privacy. Our camper window awnings keep the interior cooler and more comfortable. If you don't see the option you are looking for, please call our customer service department at 8003285100. Check out our selection of RV window awnings for sale today! ShadePro provides the bestselling models of Carefree SL RV Window Awnings at the best prices available online. Our window awnings come in a variety of sizes, colors, and in vinyl or acrylic material. Check out our Carefree SL models below. Check out our selection of RV awnings today! All rights reserved. No part of this website may be reproduced in any form, by any means, without written permission from Shade Pro, Inc. We are also offering a NEW Curbside Pickup program at our locations for your convenience. Learn more and shop with our Curbside program here. Please turn it on so that you can experience the full capabilities of this site. No need to worry about unlocking travel locks or spring mechanisms. Simply turn the hand crank to open the awning, then with awning fully open, slide the single track slider arm up to the roller and tighten the rafter knobs. Raise the roller with the lift handles to any desired pitch. The Pioneer is the easiest manual awning to operate. Features Hardware in Satin, White or Black. Kit available in White or black casting to match your current spring castings perfectly.

No need to worry about unlocking travel locks or spring mechanisms. Simply turn the hand crank to open the awning, then with awning fully open, slide the single track slider arm up to the roller and tighten the rafter knobs. Kit available in White or black casting to match your current spring castings perfectly. Since vinyl fabrics are a laminated fabric, water will not soak through making them waterproof. Thanks for Subscribing. Failure to follow the instructions The BT12 Wireless Awning Control System may be installed as part of the original motorized awning. The system offers unique features not available with a standard awning installation. The free app can be downloaded on any devices that support 1 Current iOS. Printed in USA. March, 2018 Other trademarks and trade names are those of their respective owners. BT Motion Sensor BT Remote. FCC and IC identification numbers are located on the exterior surfaces of the individual components. Operation is subject to the following two: NOTE This equipment has been tested and found to comply with the limits for a Class B digital device, pursuant to these limits are designed to provide reasonable protection against harmful interference. This equipment generates, uses and can radiate radio frequency energy. Any changes or modifications not expressly approved by the party responsible for compliance could void operation. Operation is subject to the following: Ces appareils sont conformes aux normes RSS exonérées de licence d'Industrie Canada. L'opération est soumise à ces appareils doivent accepter toute interférence reçue, y compris les interférences pouvant entraîner un dysfonctionnement. BT Motion Sensor. This equipment complies with FCC and IC radiation exposure limits for an uncontrolled environment. The equipment is conformant aux

limites d'exposition aux radiations FCC et IC pour un environnement non contrôlé. This equipment complies with FCC and IC radiation exposure limits for an uncontrolled environment.

<http://www.tenniscanberra.com.au/wp-content/plugins/formcraft/file-upload/server/content/files/162731f1c2f697---briggs-and-stratton-manuals-power-washer.pdf>

The equipment is conformant with FCC and IC radiation exposure limits for an uncontrolled environment. Carefree of Colorado, located in Broomfield, Colorado, USA. The information contained in or disclosed in this document is for informational purposes only. Every effort has been made to ensure the accuracy of the information. However, Carefree of Colorado assumes no liability for errors or for any damages that result from the use of this document. The information contained in this manual pertains to the current components and software listed on the title page. Carefree of Colorado agrees to allow the reproduction of this document for use with Carefree of Colorado Broomfield, CO BT12 Control Module Installation. 6. Awning Switch Installation. 7. LED Switch Installation. 7. Wiring Diagram. 8. Installing the BT Motion Sensor. 9. Small Box Awnings. 9. Pairing the Motion Sensor. 9. Setting the System into Pairing Mode. 10. Battery Replacement. 11. BT Motion Sensor. 11. BT Remote. 11. BT12 Wireless Awning Control Kits. 12. It is used to alert individuals to potential hazards. Obey all safety messages that follow this symbol. Indicates a hazardous situation, which if not avoided, could result in death or serious injury. Indicates a hazardous situation, which if not avoided, may result in minor or moderate injury. Indicates a situation that may result in equipment-related damage. General Safety. Occupational Safety and Health Administration. ALWAYS follow the manufacturer's instructions. Failure to follow this warning could result in death or serious injury. Soft materials such as fiberglass and. The state of California requires the following warning. California's Proposition 65 requires this. Important Note To comply with 2015 NFPA 1192 RV Standard, Section 6.4.9, switches must be labeled. When the "IGN LOCK" is connected to the ignition, the system will not start. If the distance between the module and the unit is greater than 10 feet, use appropriate sized butt splices to secure connections. The surface must be flat. NOTE The module may be oriented for best fit with mounting. Tape. Remove. Release Paper. Splice the wire to the module GND lead with a 14-16 awg butt splice.

autoescuelatosal.com/galeria/files/casio-ctk-611-manual.pdf

Use 20 awg wire and 18-22 awg butt splices. Yellow and Gray with 18-20 awg. Violet wire with 18-20 awg. Optional. Covered Bezel. Awnings. NOTE If the wire run is 30 feet or longer, use 12 awg wire to prevent voltage drop. Installers may choose to furnish the Single Pole, Single Throw Switch to Multiplexing. Controller. Multiplexing Control Connection. BT004d. Wire terminals at the switch are 18-24 awg female disconnects. NOTE The lighted switch has a third terminal. This is wired to GND. Control Module. Violet. Green. Gray. Yellow. Brown. Black 16 awg. Top. Black. Red. Bottom. Blue 16 awg. White 16 awg. Red 18 awg. Retract. LED Strip. White 16 awg. Spade Terminals x5. Rear View of. Switch Assy. Eclipse, Travel'r, Latitude, Longitude, Altitude. Blue. White 16 awg. Blue 16 awg. Freedom RM, Freestyle RM. White 16 awg. Lighted Single Throw Switch. Freedom WM, Freestyle WM, Marquee. Blue. Controller. Multiplexing Control Connection. BT002d. For GND, run a minimum 14 awg wire to chassis ground. Suitable ground would be the vehicle. The circuit should be protected by a 15 amp fuse. NOTE If the wire run is 30 feet or longer, use 12 awg wire to prevent voltage drop. Use appropriate sized butt splices to secure connections. The BT12 module provides an ignition lockout option. When the "IGN LOCK" is connected, the system will not start. The LED connection is optional to provide LED controls through the app for white LEDs. Controls. RGB lights must be installed per the standard RGB installation. The factory default is "3" on a scale of 1-5. The sensor is located in the motor head for vertical arms or in the lead rail for box awnings. Battery. Pull Tab. Motion. The cover snaps onto the rear cover. Sensor. Thumb Tab. Front Cover. Attach Bracket. Rear Cover. Release Paper. Thumb Tab. Down. Small Box Awnings. Motion. Sensor. Pull Tab. This option is available for Freestyle WM and. Freestyle RM. It is not available for the. Freedom WM, Freedom RM or Marquee. Front Cover. Pairing the Motion Sensor. Press on both sides. Attach Bracket. Rear Cover.

Down. Press Up On Rear CoverLatitude. Motion. NOTE Only 1 active motion sensor can beBattery.
Pull TabSmall Box AwningThe module should be paired.The awning should retract.Hang the cover
on the topRepeat the pairing steps for eachRefer to the Carefree Connects Mobile App manual for
setting up and pairing a smart device such as aThe app manual is available at
www.carefreeofcolorado.com.Only one active BT Motion Sensor can be paired to the BT12 Control
Module. Only one mobile device smartphone or tablet can be active at a time. Testing the Remote
FunctionsPress a second time to stop the awning motion.NOTE The LED controls are for White LED
stripsTurn the LED power switch ON. Press the LED Bright to brighten the LEDs. Press the LED Dim
to lower the LED'sON. This will continue until the batteries are replaced. The awning will operate
normally after the batteriesThe motion sensor uses two 2 675 batteries; batteries are available at
local battery outlets. Remove ScrewsThumb Tab. Remove Module. From BracketMatch Battery.
OrientationIt is not necessary to remove the mounting bracket.Match the new battery orientation
with the old batteries.The module will only fit one way in the bracket.Remove Back Cover. Slot.
CoinMatch Battery. OrientationSwitch KitIncludedIncludedIncludedIncludedIncluded. Included.
IncludedPDF Version 1.5. Linearized Yes. Author DSpringer. Create Date 20180502 1446040600.
Modify Date 20180502 1446040600. Title Microsoft Word 070029001r1 BT12InstallationManual.
Creator DSpringer. Creator Tool PScript5.dll Version 5.2.2. Producer Acrobat Distiller 10.1.16
Windows. Document ID uuidbbe8944e3d0c43b08f81d6377d6b4bd9. Instance ID
uuidb07fe773f8d94534b0e70ed0e0cd073c. Page Count 12.

<https://www.thebiketube.com/acros-bosch-shu-6800-service-manual>