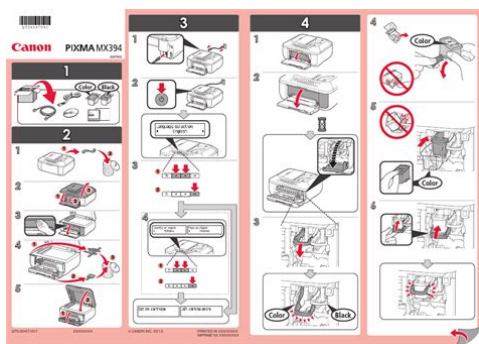


## Canon ip4200 instruction manual



**File Name:** Canon ip4200 instruction manual.pdf

**Size:** 2501 KB

**Type:** PDF, ePub, eBook

**Category:** Book

**Uploaded:** 23 May 2019, 14:45 PM

**Rating:** 4.6/5 from 646 votes.

**Download Now!**

Please check the box below to proceed.



I'm not a robot



reCAPTCHA  
Privacy - Terms

## Book Descriptions:

# Canon ip4200 instruction manual



Step 2 Install Chips 1. Take out the original cartridge, 2. Use knife to cut the 2 points 3. Then the chip is removed. Pls be careful when doing this. Page 2 and 3 4. Put glue at the same position 5. S Page 4 5. When you intend not to use the C Thank you, for helping us keep this platform clean. The editors will have a look at it as soon as possible. For further information about extending your Canon service and support, call 18003852155, or visit our Web site at [www.canonesp.com](http://www.canonesp.com). CarePAK must be purchased during your product's warranty period. For more information, view the iP4200 Driver Guide installed on your computer, or use the online help within your printer driver interface While in the printer's properties window, press the F1 key, or click upper right corner. When the POWER lamp stops blinking, the printer is turned off. About the Power Plug When removing the power plug after turning off the printer, be sure to check that the POWER lamp is not lit. Loading paper in the Auto Sheet Feeder is easy, and is convenient if you frequently switch to and print on various sizes or types of paper. Loading paper in the Cassette allows you to print without reloading paper for each job. This is useful for printing onto a large volume of paper. To use this feature, you need to configure the printer driver beforehand. Flatten the four corners of the paper before loading it. You can load up to 150 sheets of plain paper 64 gsm or 17 lb, 13 mm or 0.52 inches in height in the Auto Sheet Feeder. However, do not stack more than 50 sheets in the Paper Output Tray. Do not use envelopes with embossed or treated surfaces, a double flap, pressure seals or sticker flaps. Select either European DL Env. Loading paper in landscape orientation can cause the paper to be jammed. We recommend using genuine Canon photo media when printing photographs. 3 Press the Paper Feed Switch so that the Auto Sheet Feeder lamp lights. <http://konferencia2015.medius.sk/userfiles/drager-x-am-7000-technical-manual.xml>

- **canon pixma ip4200 user manual pdf, canon ip4200 user manual pdf, canon ip4200 user manual, canon pixma ip4200 user manual, canon ip4200 instruction manual, canon ip4200 instruction manual pdf, canon ip4200 instruction manual download, canon ip4200 instruction manual instructions, canon ip4200 instruction manual free.**

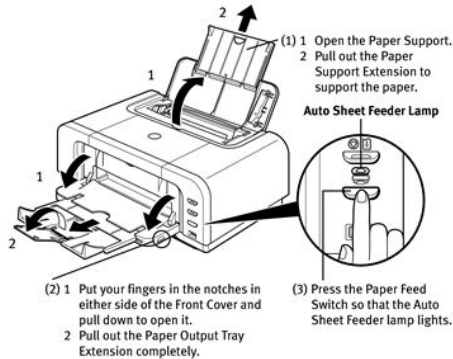
### ■ Loading Plain Paper in the Auto Sheet Feeder

- Note**
- For detailed information on the specialty media Canon provides for use with its various printers, refer to "Using Specialty Media" on page 18.
  - See "Printing Media" in the *User's Guide* for detailed instructions on how to load specialty media into the printer.

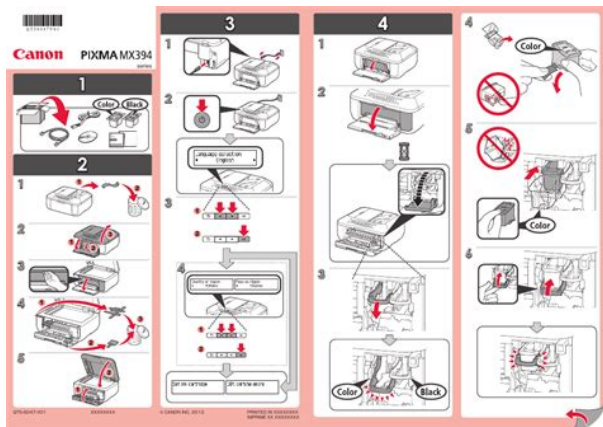
#### 1 Flatten the four corners of the paper before loading it.

- Important** When paper is curled, hold the opposing curled corners and gently bend them in the opposite direction until the paper becomes completely flat.

#### 2 Prepare to load paper.



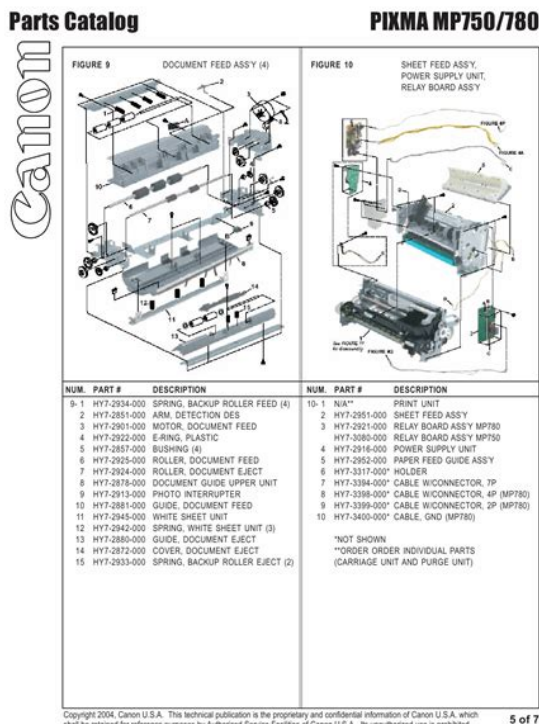
For detailed information on the specialty media Canon provides for use with its various printers, refer to See "Printing Media". You can load up to 150 sheets of plain paper 64 gsm or 17 lb, 13 mm or 0.52 inches in height in the Cassette. However, do not stack more than 50 sheets in the Paper Output Tray. Prepare the Paper Output Tray. You can also select the paper source with the printer driver. Do not use envelopes with embossed or treated surfaces, a double flap, pressure seals or sticker flaps. Select either European DL Env. This may cause paper discoloration due to natural aging. Loading paper in landscape orientation can cause the paper to be jammed. Portrait We recommend using genuine Canon photo media when printing photographs. "Using Specialty Media" "Printing with Macintosh" Landscape on page 18. The Print dialog box opens. Specify the required settings. 2 Ensure that your printer is selected. 3 Click Preferences or Properties. 1 Click Media Type to select the type of media loaded in the printer. This section describes the procedure for selecting the paper source with the Paper Feed Switch on the printer. For a detailed description of the Paper Source settings, refer to the To adjust the Print Quality settings, select Custom and click Set on the Main tab. For details, refer to the documentation for each software application you use. The steps described in this section are for printing in Mac hereafter called Macintosh Turn on the printer. The Page Setup dialog box opens. Specify the required settings. 1 Select Print from the application software's File menu. The Print dialog box opens. 2 Confirm that iP4200 is selected in Format for. For a detailed description of the Paper Source settings, refer to the Driver Guide When you select the print mode appropriate to your document from Print Mode, the document will be printed in color and at a print quality suited to the characteristics of the Media Type you have selected. <http://1worldlanguage.com/1worldlanguage/userfiles/drager-x-am-2000-calibration-manual.xml>



Printing is canceled and paper is fed out. You can also cancel a print job by clicking Cancel Printing on the Canon IJ Status Monitor. To display the Canon IJ Status Monitor, click Canon iP4200 on the taskbar. The Print dialog box opens. Select Edit Printer List from the Printer popup menu. The Printer List opens. Doubleclick the printer name displayed in the Name list. The iP4200 dialog box opens. Select the desired document, then click Delete icon. Canon Bubble Jet Direct allows you to print photos from a Canon Bubble Jet Direct compatible PictBridge incompatible digital camera or digital video camcorder without a computer, by simply connecting the digital camera or digital video camcorder to this printer. If you do so, electric shock, fire, or damage to the device could result. Depending on the model or brand of your device, you may have to select a print mode compliant with PictBridge before connecting the device. You may also have to turn on the device or select Play mode manually after connecting the device to the printer. Names of settings that are displayed on Canon PictBridge compliant device are used in the description given below. Different names may be displayed on your device depending on the brand or model. This manual refers to Windows XP SP2 operation. The operations may vary depending on the version of your Windows operating system. When replacing them, check the model numbers and their installation positions. With this printer, the ink tanks must be installed in the order from left to right indicated below. Should missing characters or white streaks appear despite sufficient ink levels, refer to. When using Mac OS X v.10.2, doubleclick the Print Center icon. Ensure that the printer is on, and then open the Top Cover. The Print Head Holder moves to the center. If the Top Cover is left open for more than 10 minutes, the Print Head Holder moves to the right. Then, remove the film completely.

2 Remove the orange protective cap from the bottom of the ink tank and discard it. Be sure to remove the clear film from the ink tank in the exact order shown in step 41, as failure to follow this step may cause the ink to leak and stain your clothes and hands. Ensure that all the ink tanks are installed in the order directed by the label. The Print Head Holder moves to the right. The ink tank installation process is now complete. Ensure that the Inner Cover is closed. Printing will not occur if the Inner Cover is open. The ALARM lamp still flashes orange after the Top Cover is closed if an ink tank is not installed properly. Follow the procedures below to clean the nozzles. If the ruled lines are shifted after running the print head maintenance, align the Print Head. Use this function when printed results are blurred or the color is incorrect. Printing the Nozzle Check Pattern Without a Computer Nozzle check pattern printing can also be executed from the printer itself. The nozzle check pattern will be printed. Clicking Initial Check Items displays the items to be checked before printing the pattern. Examine the pattern and take the appropriate action. "Examining the Nozzle Check Pattern". When using Mac OS X v.10.2, doubleclick the Print Center icon. 3 Select the name of your printer from the Name list and click Utility. Examine the nozzle check pattern output by the printer, and clean the Print Head when necessary. The nozzle check pattern will not be printed correctly if there is not enough ink. If you want to continue to clean the Print Head from here, go to step 33 of the Windows or Macintosh Print Head Cleaning procedures as appropriate. "Print Head Cleaning". Note that cleaning the Print Head causes waste ink to be absorbed in the waste ink

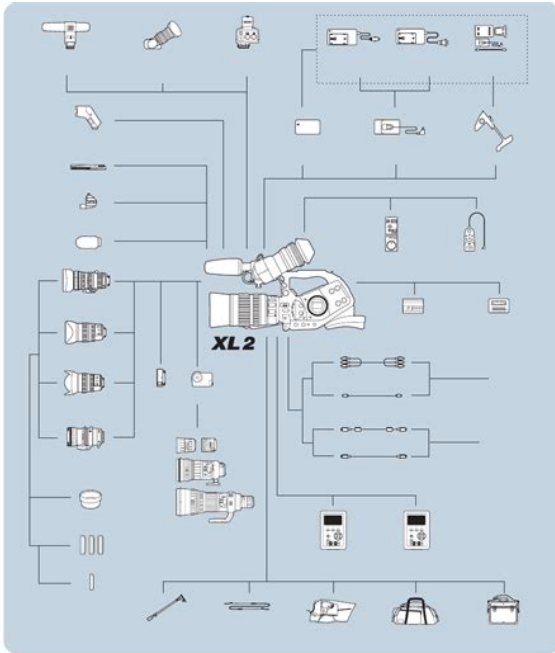
absorber. Cleaning the Print Head consumes ink, so perform Print Head Cleaning only when necessary. Print Head Cleaning starts when the POWER lamp starts blinking green.



<https://formations.fondationmironroyer.com/en/node/9130>

Do not perform any other operations until the Print Head Cleaning finishes. This takes about 40 seconds. 5 Read the message and click Print Check Pattern to print the nozzle check pattern. The nozzle check pattern is printed. Open the Canon IJ Printer Utility dialog box. 1 Select Applications from the Go menu, and then doubleclick the Utilities folder. 2 Doubleclick the Printer Setup Utility icon. Do not perform any other operations until the Print Head Cleaning finishes. The nozzle check pattern is printed. Note that cleaning the Print Head causes waste ink to be absorbed in the waste ink absorber. Print Head Deep Cleaning consumes more ink than standard Print Head Cleaning, so perform this procedure only when necessary. Print Head Deep Cleaning starts when the POWER lamp starts blinking green. Do not perform any other operation until the Print Head Deep Cleaning finishes. This takes about 75 seconds. Print the nozzle check pattern to check the Print Head condition. "Printing the Nozzle Check Pattern". Open the Canon IJ Printer Utility dialog box. 1 Select Applications from the Go menu, and then doubleclick the Utilities folder. 2 Doubleclick the Printer Setup Utility icon. When using Mac OS X v.10.2, doubleclick the Print Center icon. Do not perform any other operation until the Print Head Deep Cleaning finishes. Print the nozzle check pattern to check the Print Head condition. "Printing the Nozzle Check Pattern". Aligning the Print Head positions allows you to print without shifts in the color registration. Print head alignment is performed either automatically or manually. This section deals with automatic Print Head alignment only. Do not open the Top Cover while printing. Clicking Check Setting prints the current settings and finishes the print head alignment. Check the printed pattern. If the pattern is printed as shown below, the Print Head is aligned automatically. The printer is now ready to use. Open the Canon IJ Printer Utility dialog box.

<http://dzkgjy.com/images/bsa-sportsman-hv-owners-manual.pdf>



1 Select Applications from the Go menu, and then doubleclick the Utilities folder. 2 Doubleclick the Printer Setup Utility icon. If the pattern is printed as shown below, the Print Head is aligned automatically. The printer is now ready to use. If the pattern is not printed successfully, refer to "Eleven flashes" in "Handling Error Messages" If results of Automatic Print Head Alignment are not satisfactory, refer to "Routine Maintenance". Use High Resolution Paper, Photo Paper Pro or other Canon specialty paper to print images that have high color saturation. On the Main tab of the printer driver, ensure that the Media Type selected matches the paper loaded. Replace the ink tank and close the Top Cover. It may solve the problem. Delete an undesired print job, if there is any. Use Canon IJ Status Monitor in Windows or Printer Setup Utility or Print Center in Macintosh for the deletion. 1. Open the printer properties dialog box. Remove the paper following the procedure below. Be careful not to touch the components inside the printer. If you cannot pull the paper out, turn the printer off and turn it back on. If the paper is loaded in the Auto Sheet Feeder, remove the paper from the Auto Sheet Feeder and close the Paper Support. Once the waste ink absorber becomes completely full, printing cannot be performed until the Waste ink tank is replaced. Replace the ink tank. Printing under the situation may damage the Print Head. Canon shall not be liable for any printer malfunction or damage caused by refilled ink tanks. A USB port is selected if either USBnnn Canon iP4200 or MPUSBPRNnn Canon iP4200 where n is a number is indicated. Replace the ink tank. Canon shall not be liable for any printer malfunction or damage caused by refilled ink tanks. This section describes errors that are indicated on Canonbrand PictBridge or Bubble Jet Directcompatible cameras. The error messages and operations may vary depending on the camera you are using.

<http://www.e-lysis.com/images/bsa-ultra-multishot-manual.pdf>



Default Off No printing, Date, File No., Both, Off. Do not attempt to use printer in any way not described in this manual. You may cause an electric shock, fire or damage the printer if you ignore any of these safety precautions. Choosing a location Do not install the printer in a location that is unstable or subject to excessive vibration. Do not install the printer in locations that are very humid or dusty, in direct sunlight, outdoors, or close to a heating source. If such changes or modifications should be made, you could be required to stop operation of the equipment. Canon U.S.A., Inc. One Canon Plaza. All other product and brand names are trademarks of their respective owners. As an E partner, Canon U.S.A., Inc. This page requires Javascript. Modify your browsers settings to allow Javascript to execute. See your browsers documentation for specific instructions. To install your download click on the name of the downloaded file. Scroll down to see your support options. You can also click one of these links to search our extensive Knowledge Base or visit the Canon Community Forum. The driver may be included in your OS or you may not need a driver. Recommended Drivers

File Name	Date	File Size	Optional Drivers	File Name	Date	File Size	Recommended Software
File Name	Date	File Size	Optional Software	File Name	Date	File Size	Recommended Manuals
File Name	Date	File Size	Optional Manuals	File Name	Date	File Size	Warranty

repair or replacement shall not extend the original warranty period of the Product. A dated proof of purchase is required at the time of warranty service. A copy of your dated bill of sale will satisfy this requirement. This warranty does not cover any accessories, or any consumables, such as paper or ink cartridges, as to which there shall be no warranty or replacement. Repairs of such Canon brand peripheral equipment shall be governed by the terms of the Separate Warranty.

The sole warranty, if any, with respect to such nonCanon brand items is given by the manufacturer or producer thereof. If the problem cannot be corrected over the telephone, and you elect the InstantExchange option, a reference number will be issued to you. You will be asked for the Product serial number and other information pertaining to your Product and for a ship — to location for the replacement Product must include street address. The Canon USA repair facility will ship out the replacement Product prepaid by Canon USA. After receipt of the replacement Product with instructions and a prepaid waybill, follow the enclosed instructions on how to ship your product to the Canon USA repair facility. Your Product must be returned in the shipping carton in which the replacement Product was packed and include the reference number, A COPY OF YOUR DATED PROOF OF PURCHASE BILL OF SALE, and a complete explanation of the problem. Canon USA does not guarantee same day shipment in the event of the occurrence of factors beyond its reasonable control. The replacement Product you receive may be a refurbished or reconditioned unit and will be covered for the balance of the period remaining on your original limited warranty. InstantExchange warranty service is subject to the availability of refurbished or new replacement units. Canon U.S.A., Inc. One Canon Park Melville, NY 11747 USA Scroll down to easily select items to add to your shopping cart for a faster, easier checkout. Visit the Canon Online Store Perfect for creating any type of Greeting Card with an extensive variety of downloadable templates from the Canon Inc. Tired of trying to make your handwriting legible in order to illustrate a point. For your next important meeting, you can make impressive charts and graphs with these clear, overhead transparencies,

printed right from your Canon Color Bubble Jet printer. Package includes 50 sheets. Glossy finish for impressive photos. Genuine Canon Paper for quality images.

<http://www.festivalmarrakech.info/wp-content/plugins/formcraft/file-upload/server/content/files/16271444240893---bpr-6-user-manual.pdf>

Bubble Jet Simplicity. Glossy, topquality paper for vibrant, lifelike color images you wont be able to tell from the original. Has the same weight and feel as actual photo paper. Package includes 20 sheets. An economical choice for great prints. An economical choice for great prints. Optimize output resolution to create nearphotographic images. This paper is great when you want highquality color output to produce winning reports and eye-catching graphics. Use with genuine Canon Photo Inks for true photoquality output. Package includes 100 sheets. Package includes 50 sheets. Simply print your photos on the included 2 sided paper, slide the pages easily into the album, and share your memories! Simply print your photos on the included 2 sided paper, slide the pages easily into the album, and share your memories! This paper yields a glossy finish and exceptionally right color, giving your images the look and feel of a traditional photograph. Package includes 120 sheets. This paper yields a glossy finish and exceptionally right color, giving your images the look and feel of a traditional photograph. Package includes 50 sheets. This paper yields a glossy finish and exceptionally right color, giving your images the look and feel of a traditional photograph. Package includes 20 sheets. This paper yields a glossy finish and exceptionally right color, giving your images the look and feel of a traditional photograph. Includes 20 sheets per pack. Learn about the technology behind the paper. Package includes 20 sheets. Package includes 15 sheets. High quality photos print right onto a sticker sheet, so just peel and stick. 16 stickers per sheet. Photo Paper Plus SemiGloss produces vibrant images with low glare and a soft glossy finish for photo lab quality prints right at home. Photo Paper Plus SemiGloss produces vibrant images with low glare and a soft glossy finish for photo lab quality prints right at home.

<BARSUGO.COM/ckfinder/userfiles/files/car-stereo-diagram-manual.pdf>

Photo Paper Plus SemiGloss produces vibrant images with low glare and a soft glossy finish for photo lab quality prints right at home. Photo Paper Plus SemiGloss produces vibrant images with low glare and a soft glossy finish for photo lab quality prints right at home. Photo Paper Plus SemiGloss produces vibrant images with low glare and a soft glossy finish for photo lab quality prints right at home. You may find documents other than just Error Code 520 Error code 5200 not covered in manual. Trouble shooting says that with 11 flashe. We keep our list of direct Canon PIXMA iP4200 driver and firmware links uptodate so they are easy to find when you need them. It will help you install the system correctly and ensure trouble free printing. Great care is taken to prepare your CISS for trouble free installation. Your CISS has been primed Australian customers only and should be ready for immediate installation into your pYour printer will print either of the following; A or B If your printer has produced a perfect result A, please attach a copy of the nozzle check to your purchase receipt as this will validate your warranty. You can now start to install The cartridge holder will move to the cartridge change position. Remove power cable from the back of your printer. Remove the cartridges from the printer. LED Missing LED undamaged cartridge chip damaged cartridge chip e Place the chip onto the corresponding coloured CISS cartridge, ensuring that the small plastic lugs are inserting into the chip holes. Use a soldering iron gently melt the plastic lugs to hold the chip in place. Travel Plug Filler Plug b Using the syringe, remove any excess ink from the inner air balance chamber. The chamber does not have to be completely empty for the CISS to function correctly. Removing excess ink simply helps reduces the air pressure drawing back from the cartridges and can assist in preventing air to develop in the ink feeder tubes.

The eThe print head will then lift out b Remove the 5 silicone seals from your kit. During manufacture 2 seals may stick together giving the appearance of a single seal. Please ensure

Please ensure that the silicone seals do not move from position when inserting the cartridges. These seals must not cover the silver printer head. This is done by slowly moving the clip in an anticlockwise direction. Beware that adjustments to the tube length may be required. To check this, move the cartridge holder left and right to each end of the printer. It should reach both ends with ease. Check that the tubing is once again please ensure not to twist or bend the tubing. This will keep the switch permanently activated as your printer lid will no longer close enough to activate this switch. Store this cover away with your printer manuals etc, in the event you need to reattach it for printer warranty return issues. The clips have a piece of double sided tape attached, simply remove the backing and attach. This will prevent the scanner lid from crushing the silicone tubing. To check this, move the cartridge holder left and right to each end of the printer. Check that please note after the installation of the CISS the printer may not register that the lid is closed. If this occurs please place some tape across the trigger to keep it activated. The metal tube arm is then attached to the clip also using the double sided tape. The design of the MP530 does not allow you to fit the metal tube arm. This allows the scanner lid to close without crushing the feeder tubes. Left Side Right side e The scanner lid has moulded plastic parts which should fit into the recess of the metal tubing rod. If it does not, move the metal tube arm to a position where the plastic fits into the recess when the lid is closed. Information on maintenance and troubleshooting of the Canon Pixma iP 4200; Part 2 Technical Reference.

New technology and technical information such as FAQs Frequently Asked Questions of the Canon Pixma iP 4200; Part 3 Appendix. Block diagrams and pin layouts of the Canon Pixma iP4200; Reference This manual does not provide sufficient information for disassembly and reassembly procedures. Refer to the graphics in the separate Parts Catalog. All trademarks and copyrights in the published materials belong to their respective owners. Working with this printer means you will have great business efficiency. It allows you to automatically print on two sides of one paper, so you will have great save on paper cost. The Canon PIXMA iP4200 also brings one connectivity options using HiSpeed USB and parallel. You will easily know that your ink toner is running out by seeing the LED status. In addition, the ChromaLife100 also will last your beautiful photo print for up to 100 years. With direct printing, you can print from your Canon cameras using PictBridge USB port. You will achieve greater print quality without sacrificing the print quality. With a maximum print resolution up to 9600 x 2400 dpi, you will achieve premium photo and text printing quality. The Canon PIXMA iP4200 comes with faster print speed up to 29 pages per minute for black and 20 pages per minute for color. You can download a driver on the links we provided. Select it and press Continue. When you have already completed the downloading process, it will be saved in the certain folder. Do not worry, the installation will be started automatically. Find a minus sign on it. If find any broken link or some problem with this printer please let us know, we will fix it as soon as possible. You don't have to go to the official Canon site, simple way to download it, just click on the link that we have provided, and don't forget to follow the manual instruction or you can download a user manual for your printer on this link below. Find out more. Okay, thanks. Please try again. Please try again.

Reduce the printing cost by 90 percent compare with the original inkjet cartridge. In order to navigate out of this carousel please use your heading shortcut key to navigate to the next or previous heading. Register a free business account Please try your search again later. From now on, ONE set of cartridge for your printer is all you will ever need. Reduce your printing cost up to 90%! Manufactured in ISO 90012000 Certified Factory! Significant Saving on printing cost. With this system you will never need to buy cartridges again. We will provide a 30 day warranty and Satisfaction Guaranteed or your Money Back. For Cartridge Number Prefilled with Ink Volume Manufactured in ISO 90012000 Certified Factory! How to refill. Its EASY! Just simply purchase a new supply of any color before you run out of ink at least 10% ink left in the outer tank and just pour the ink into the outer tank. We recommend to use our same quality refill inks. Royal Elements

Videos for related products 500 Click to play video Royal Elements WATERPROOF PRINTABLE STICKER PAPER!

Plus Testing and Product Showcase Royal Elements Videos for related products 151 Click to play video How to figure out the printing side of the transparency film quickly and the troubleshooting guide PTsky Videos for related products 128 Click to play video Inkjet IronOn Dark T Shirt A4 Transfers Paper SWAGITLOUD Videos for related products 116 Click to play video How to use koala inkjet watersilde decal paper Etouching Videos for related products 043 Click to play video KOALA Sublimation paper for Polyester Tshirt Etouching Videos for related products 049 Click to play video Printable vinyl sticker paper tutorial Royal Elements Videos for related products 058 Click to play video How to use sublimation paper BetterSub Next page Upload your video Video Customer Review The 5 Best Printer Paper See full review BestReviews Onsite Associates Program To calculate the overall star rating and percentage breakdown by star, we don't use a simple average. Instead, our system considers things like how recent a review is and if the reviewer bought the item on Amazon. It also analyzes reviews to verify trustworthiness. Please try again later. Amazon Customer 3.0 out of 5 stars And then there are further problems when the chip you have moved decides the cartridge is out of ink and you must instruct the printer to ignore the out of ink signal. The instructions are useless. Also, you will not be able to close the top of the printer with the system installed, an item to consider if storage is necessary. It worked fine for a while then gave me a 6A80 error. Tried everything. Printer is history. Don't buy this CISS for any printer. This product should be returned to China and not be allowed back in the USA again. New refers to a brandnew, unused, unopened, undamaged item, while Used refers to an item that has been used previously. Download drivers, software, firmware and manuals for your Canon product and get access to online technical support resources and troubleshooting.

PIXMA iP4200 Support Download drivers, software and manuals Canon Eur Canon PIXMA iP4200 Software and Driver Download for Windows, Mac OS, and Linux. In this website, the owner of canonsoftwaredriver.com has listed you much more driver, software, and user manual what you need to download for Canon iP4200 print. It delivers a resolution of up to 9600 x 2400 color dpi 1, for amazing detail and clarity. PIXMA iP4200 Printer pdf manual downlo. EOS M og EOS Rserierne af spejlløse fullframekameraer leverer samme styrke som et digitalt spejlreflekskamera i et kompakt kamera. Fa mere at vide om vores brug af cookies og rediger dine cookieindstillinger her. Du accepterer vores brug af cookies på din enhed ved at fortsætte med at bruge vores webside eller ved at klikke på Jeg accepterer. Det tager 1 minut og vil hjælpe os med at forbedre vores supportwebsted. Ask your question to other Canon Pixma iP users. Printing has been a different experience ever since you installed ST Continuous Ink Supply system on your own printer. Download software for your Pixma printer and much more. The better your problem and question is described, the easier it is for other Canon Pixma iP owners to provide you with a good answer. Find Great Deals from the Top Retailers. Canon IP Printer User Manual., Inc. For more information, view the iP User's Guide and Printer Driver Guide installed on your computer, or use the online., to provide the service technicians of this product with the information necessary for qualified persons to learn technical theory, installation, maintenance, and repair of products. Open as PDF. PIXMA Ink Finder. C A N O N P I X M A I P I n s t a l l a t i o n I n s t r u c t i o n. Thank you for purchasing ST Continuous Ink Supply System. PIXMA Wireless Printing Compatibility. The pixma uses large, easily refillable transparent cartridges. Pixma iP printer quit printing black text, only color, even black ink tanks are good. A. PIXMA iP Series Printer pdf manual download.

<http://www.raumboerse-luzern.ch/mieten/40-hp-mercury-outboard-motor-manual>